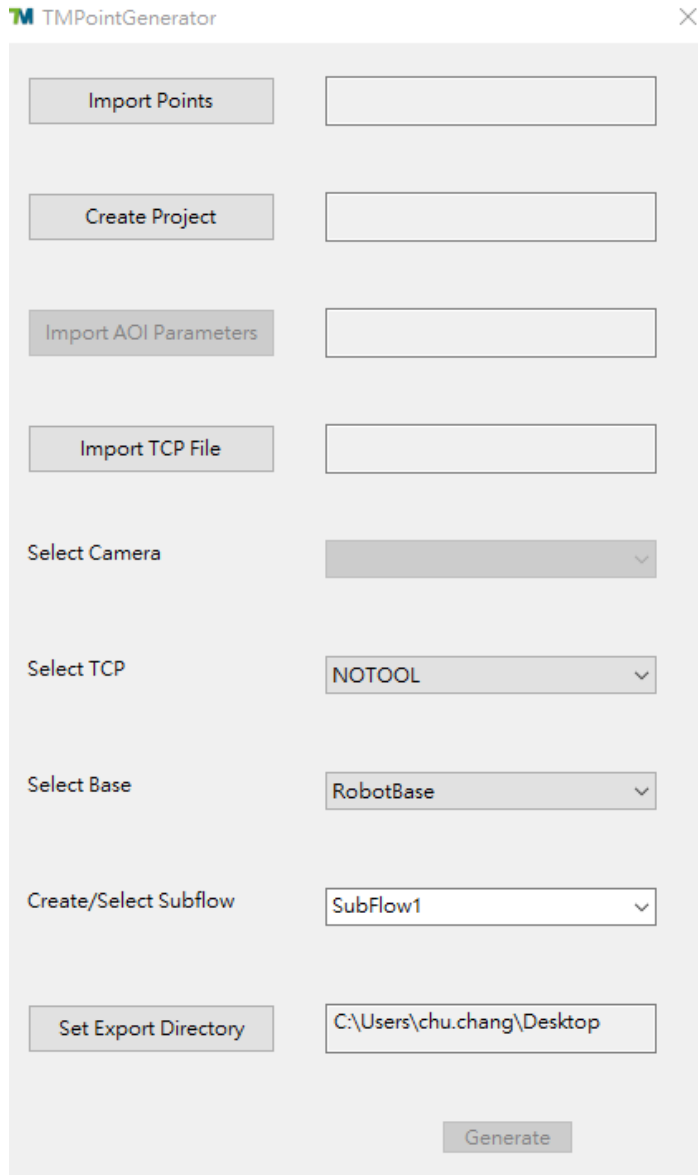




# TM Point Generator: Import Points from Excel Position Table

# Brief software introduction



The screenshot shows the TMPointGenerator software interface. It features a vertical list of controls on the left side, each with a corresponding input field or dropdown menu on the right. The controls are: 'Import Points' (button), 'Create Project' (button), 'Import AOI Parameters' (button), 'Import TCP File' (button), 'Select Camera' (dropdown menu), 'Select TCP' (dropdown menu with 'NOTOOL' selected), 'Select Base' (dropdown menu with 'RobotBase' selected), 'Create/Select Subflow' (dropdown menu with 'SubFlow1' selected), and 'Set Export Directory' (text input field with 'C:\Users\chu.chang\Desktop' entered). A 'Generate' button is located at the bottom right of the interface.

Import Points: import points from excel position table

Create Project: create a new project or choose an existed one

Import AOI Parameters: import AOI parameters from existed project

Import TCP File: import TCP from existed TCP file

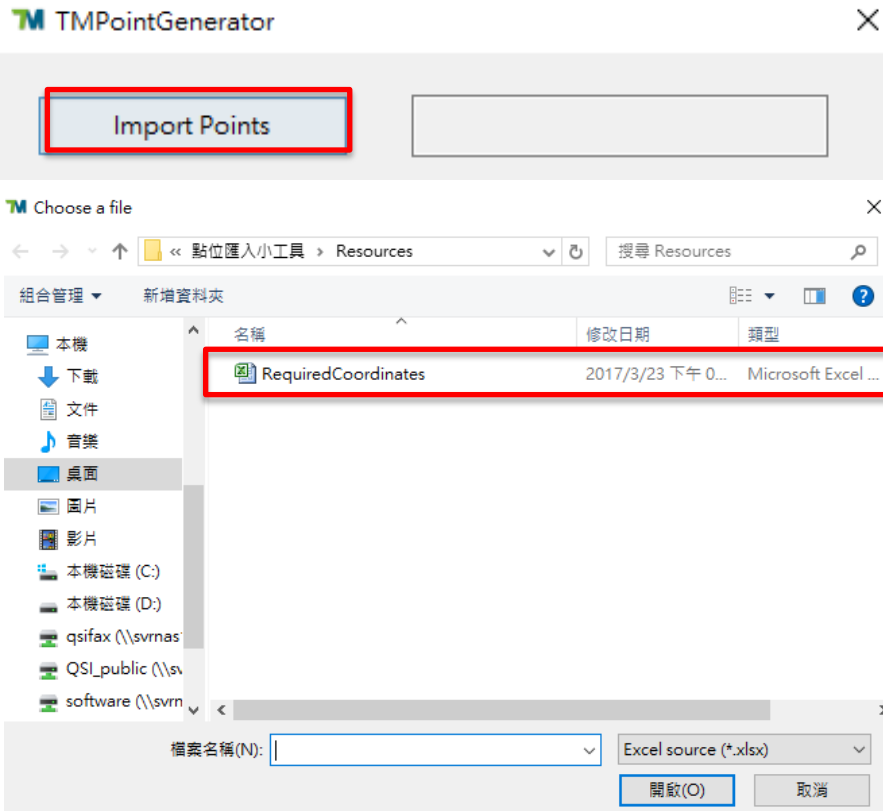
Select Camera: select camera parameters

Select TCP: select TCP for new points

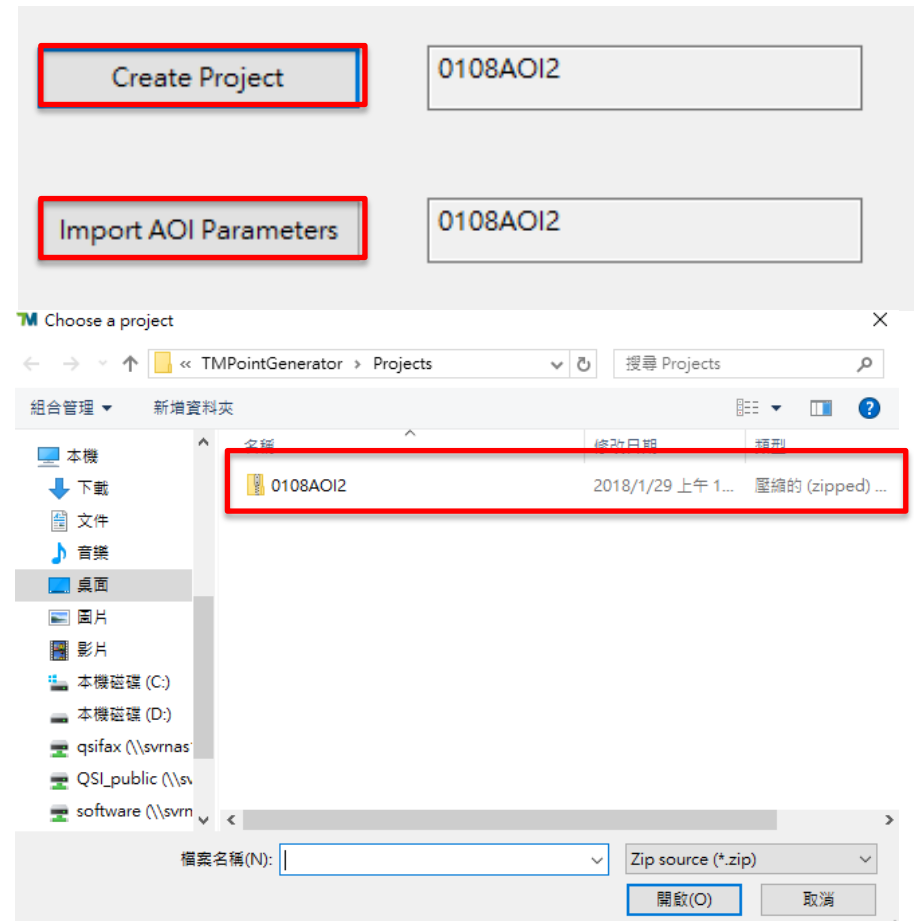
Select Base: select Base for new points

Create/Select Subflow: Create a new subflow or choose a existed one

Set Export Directory: set export path



User can only choose Excel file to import points.



User can either create a new project or edit an existed one.

If there is already an AOI job in the project, the job will be imported automatically.

Select Camera

Select TCP

Select Base

Create/Select Subflow

Set Export Directory

Generate

TMCam\_AF01:4103126445  
Basler:21776377  
TMCam\_AF01:4103126445

NOTOOL  
NOTOOL  
test0314  
BiasSharp0323  
HandCamera

RobotBase  
RobotBase  
vision\_o

SubFlow\_1

C:\Users\chu.chang\Desktop

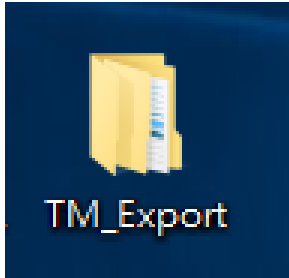
After AOI job is imported, the parameter of camera would be generated.


User can find every TCP in the project after importing TCP file.

User can choose base which is existed in the original project.

Create a new subflow or choose an existed one to generated points and vision jobs.

Select the export file destination.



 TMLPointGenerator

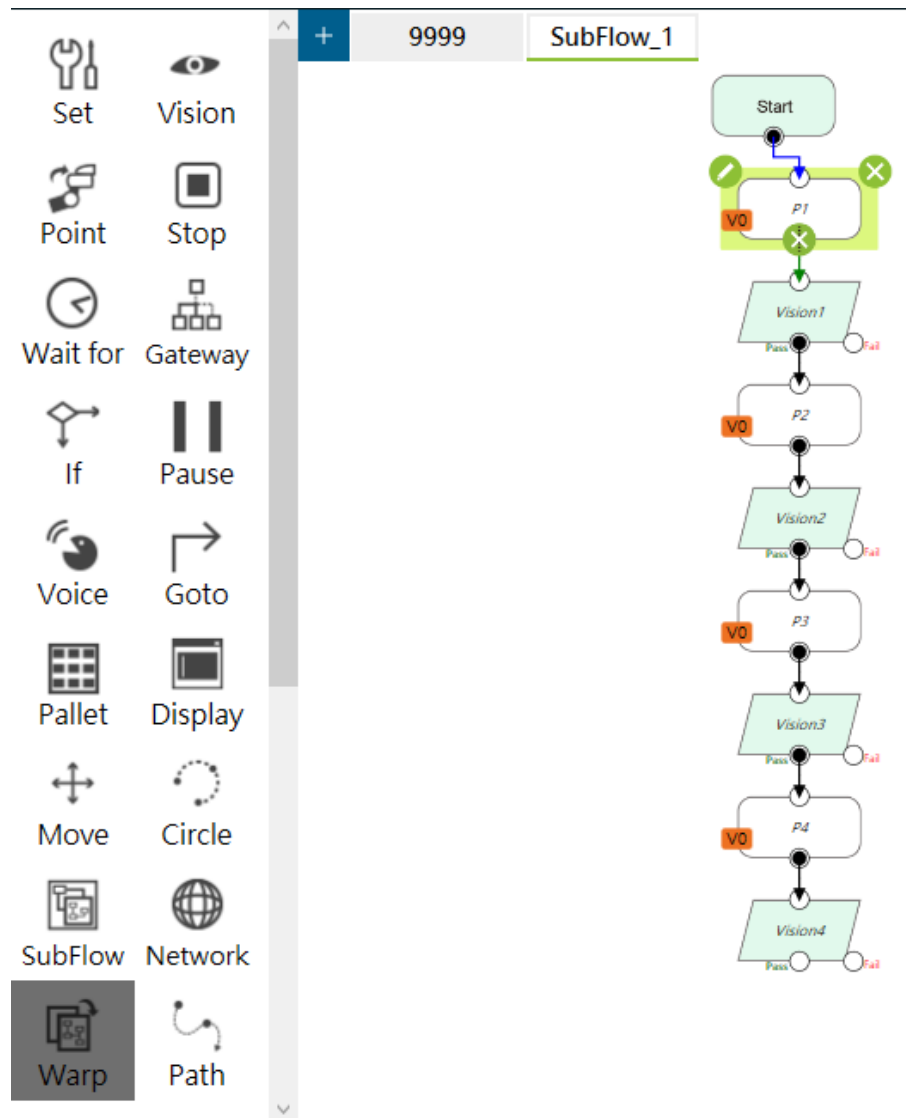
2018/1/29 上午 1... 檔案資料夾

While trying to import project, user will see this name on the import list.

Once user click generate, directory as TM\_Export\TMLPointGenerator\Project will be created.

If TM\_Export\TMLPointGenerator is already existed in the destination, only project will be created.

# The new subflow is generated with new points and vision nodes.





Thank You

