



Non-Pause thread

Outline

➤ Purpose 目的

provide one more choice of Thread

1.after pause, Thread follow pause

2.after pause, Thread keep running(Non-Pause thread)

➤ Equipment 使用設備

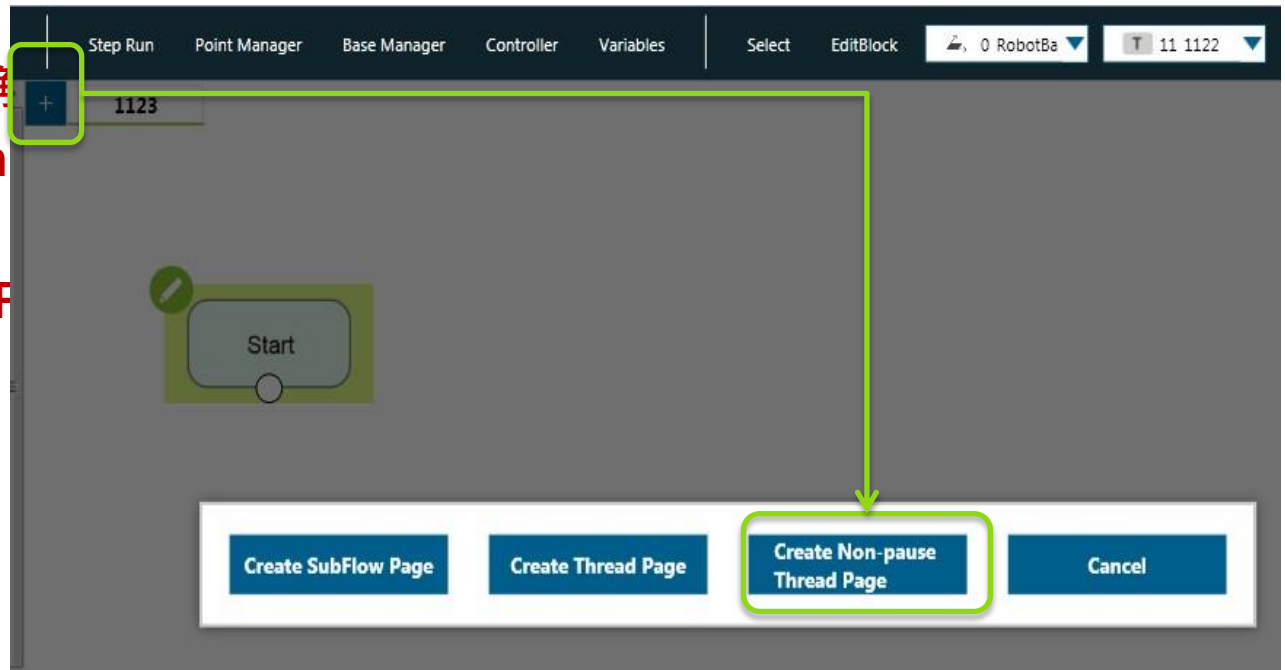
1. TM5

➤ Application 應用講解

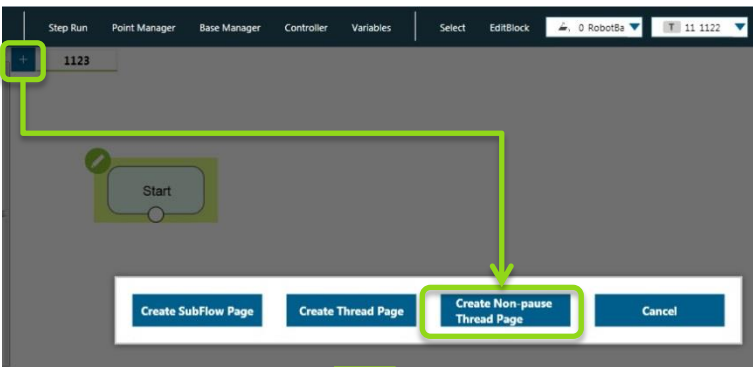
➤ Function operation

1.Thread

➤ Flow example 範例Flow



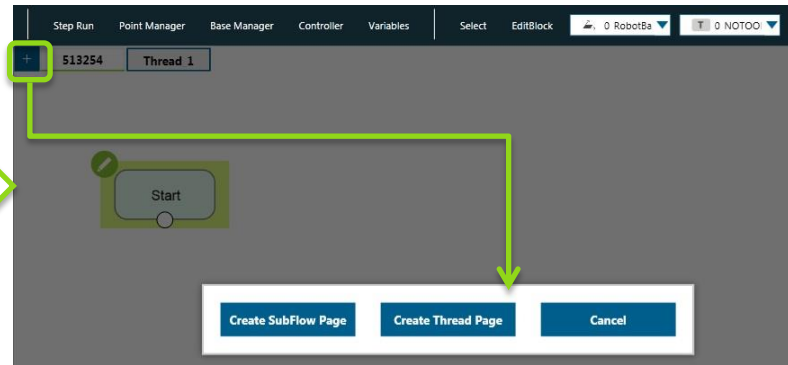
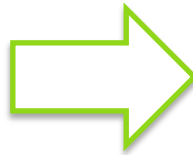
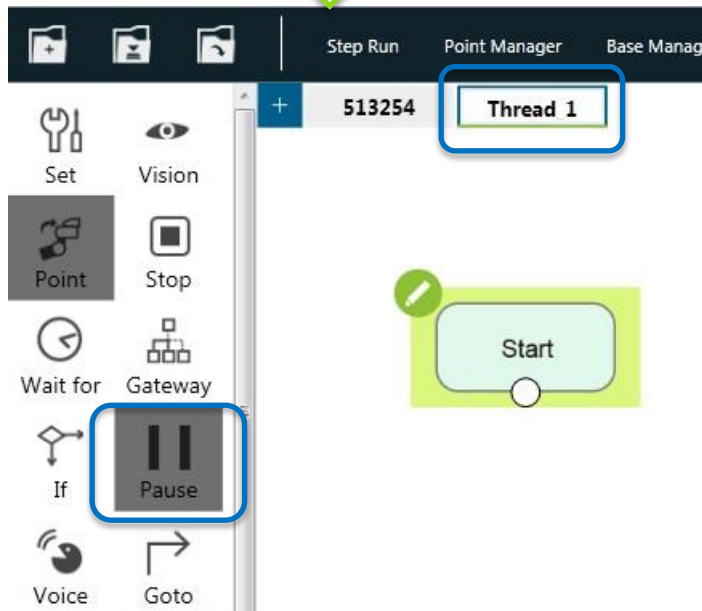
Non-Pause thread



After click the mean formula key, it will appear four choices.

It is Non-pause thread that be the third choice. Then click it, the function of Pause is unavailable and the Thread with blue frame above.

Moreover, Non-pause thread can add only one. So click the + key again, the other three choices appeared without Non-pause thread.



Non-Pause thread vs. Thread

Thread_2

Without frame

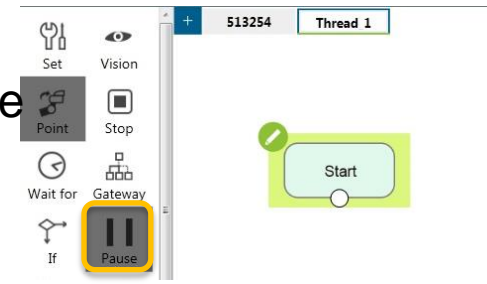
With blue frame

Thread_1



The function of pause available

The function of pause unavailable



465813

Thread_1

Thread_2

Thread_3

Allow to establish several one

513254

Thread_1

Allow to establish only one

Click pause during project operating, Thread pause, too.

Click pause during project operating, Thread keep running.

END